

DISTRICT COURT - CSRBA
Fifth Judicial District
County of Twin Falls - State of Idaho

JUN 10 2022

By _____ Clerk
 _____ Deputy Clerk

IN THE DISTRICT COURT OF THE FIFTH JUDICIAL DISTRICT OF THE
 STATE OF IDAHO, IN AND FOR THE COUNTY OF TWIN FALLS

In Re CSRBA) PARTIAL DECREE PURSUANT TO I.R.C.P. 54(b)
 Case No. 49576) FOR FEDERAL RESERVED
 _____) WATER RIGHT NO. 94-09519A

NAME AND ADDRESS: UNITED STATES OF AMERICA ACTING THROUGH
 USDA FOREST SERVICE
 550 W FORT ST MSC 033
 BOISE ID 83724

SOURCE: See Attachment 1, Column A TRIBUTARY: See Attachment 1, Column B

Sources are located on National Forest System Land in the Upper Shoshone Creek subwatershed (HUC12 170103010301).

QUANTITY: The amount of water necessary to control and suppress forest fires.

PRIORITY DATE: 11/06/1906

POINT OF DIVERSION: See Attachment 1, Columns C through G

PURPOSE AND PERIOD OF USE: PURPOSE OF USE PERIOD OF USE
 Administrative-Fire Suppression 01/01 - 12/31

PLACE OF USE: National Forests in Idaho and the Kaniksu, Lolo and Kootenai National Forests in Montana.
 See Attachment 2.

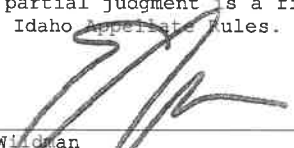
OTHER PROVISIONS NECESSARY FOR DEFINITION OR ADMINISTRATION OF THIS WATER RIGHT:

This right is limited to the intermittent diversion and use of water for the purpose of suppressing wildfires. This water right shall not be used as a basis to prevent the future appropriation of water.

This partial decree is subject to such general provisions necessary for the definition of the rights or for the efficient administration of the water rights as may be ultimately determined by the Court at a point in time no later than the entry of a final unified decree. Idaho Code § 42-1412(6).

RULE 54(b) CERTIFICATE

With respect to the issues determined by the above partial judgment it is hereby CERTIFIED, in accordance with Rule 54(b), I.R.C.P., that the court has determined that there is no just reason for delay of the entry of a final judgment and that the court has and does hereby direct that the above partial judgment is a final judgment upon which execution may issue and an appeal may be taken as provided by the Idaho Appellate Rules.



 Eric J. Windman
 Presiding Judge of the
 Coeur d'Alene-Spokane River Adjudication

Attachment 1

	A	B	C	D	E	F	G
1	SOURCE NAME	TO TRIBUTARY	TOWNSHIP	RANGE	SECTION	QQ	SURVEY CODE AND NUMBER
2	Shoshone Creek	North Fork Coeur d'Alene River	51N	04E	4	NESW	
3	Unnamed Stream	Shoshone Creek	51N	04E	4	NESW	
4	Unnamed Stream	Shoshone Creek	51N	04E	4	NESW	
5	Pipe Creek	Shoshone Creek	51N	04E	4	NWNE	L 2
6	Shoshone Creek	North Fork Coeur d'Alene River	51N	04E	4	SENW	L 2
7	Shoshone Creek	North Fork Coeur d'Alene River	51N	04E	4	SENW	
8	Unnamed Stream	Shoshone Creek	51N	04E	4	SENW	
9	Shoshone Creek	North Fork Coeur d'Alene River	51N	04E	4	SESW	
10	Unnamed Stream	Shoshone Creek	51N	04E	5		
11	Unnamed Stream	Shoshone Creek	51N	04E	5		
12	Unnamed Stream	Shoshone Creek	51N	04E	5		
13	Unnamed Stream	Shoshone Creek	51N	04E	6		
14	Unnamed Stream	Shoshone Creek	51N	04E	6		
15	Falls Creek	Shoshone Creek	51N	04E	9		
16	Shoshone Creek	North Fork Coeur d'Alene River	51N	04E	9		
17	Unnamed Stream	Shoshone Creek	51N	04E	9		
18	Unnamed Stream	Shoshone Creek	51N	04E	9		
19	Unnamed Stream	Shoshone Creek	51N	04E	9		
20	Hemlock Creek	Shoshone Creek	52N	03E	1		
21	Unnamed Stream	Hemlock Creek	52N	03E	1		
22	Unnamed Stream	Hemlock Creek	52N	03E	1		
23	Unnamed Stream	Little Lost Fork	52N	03E	1		
24	Unnamed Stream	Little Lost Fork	52N	03E	1		
25	Unnamed Stream	Shoshone Creek	52N	03E	1		
26	Unnamed Stream	Shoshone Creek	52N	03E	1		
27	Unnamed Stream	Shoshone Creek	52N	03E	1		
28	Hemlock Creek	Shoshone Creek	52N	03E	2		
29	Unnamed Stream	Hemlock Creek	52N	03E	2		
30	Unnamed Stream	Hemlock Creek	52N	03E	2		
31	Unnamed Stream	Hemlock Creek	52N	03E	2		
32	Unnamed Stream	Little Lost Fork	52N	03E	2		
33	Unnamed Stream	Little Lost Fork	52N	03E	2		
34	Little Lost Fork	Shoshone Creek	52N	03E	11		
35	Unnamed Stream	Little Lost Fork	52N	03E	11		
36	Unnamed Stream	Little Lost Fork	52N	03E	11		
37	Unnamed Stream	Little Lost Fork	52N	03E	11		
38	Little Lost Fork	Shoshone Creek	52N	03E	12		
39	Unnamed Stream	Little Lost Fork	52N	03E	12		
40	Unnamed Stream	Little Lost Fork	52N	03E	12		
41	Unnamed Stream	Little Lost Fork	52N	03E	12		
42	Unnamed Stream	Little Lost Fork	52N	03E	12		
43	Unnamed Stream	Little Lost Fork	52N	03E	12		
44	Unnamed Stream	Shoshone Creek	52N	03E	12		
45	Unnamed Stream	Shoshone Creek	52N	03E	12		
46	Sentinel Creek	Shoshone Creek	52N	03E	13		
47	Unnamed Stream	Little Lost Fork	52N	03E	13		
48	Unnamed Stream	Sentinel Creek	52N	03E	13		
49	Unnamed Stream	Sentinel Creek	52N	03E	13		
50	Unnamed Stream	Sentinel Creek	52N	03E	13		
51	Little Lost Fork	Shoshone Creek	52N	03E	14		
52	Unnamed Stream	Little Lost Fork	52N	03E	14		
53	Unnamed Stream	Sentinel Creek	52N	03E	14		
54	Sentinel Creek	Shoshone Creek	52N	03E	23		
55	Unnamed Stream	Sentinel Creek	52N	03E	23		
56	Unnamed Stream	Shoshone Creek	52N	03E	23		
57	Camp Creek	Shoshone Creek	52N	03E	24		
58	Sentinel Creek	Shoshone Creek	52N	03E	24		
59	Unnamed Stream	Shoshone Creek	52N	03E	24		
60	Unnamed Stream	Shoshone Creek	52N	03E	25		
61	Unnamed Stream	Shoshone Creek	52N	03E	25		
62	Unnamed Stream	Shoshone Creek	52N	03E	25		
63	Unnamed Stream	Shoshone Creek	52N	03E	26		
64	Pine Flat Creek	Shoshone Creek	52N	03E	36		
65	Clinton Creek	Shoshone Creek	52N	04E	4		
66	Ulm Creek	Shoshone Creek	52N	04E	4		
67	Unnamed Stream	Clinton Creek	52N	04E	4		

Attachment 1

	A	B	C	D	E	F	G
1	SOURCE NAME	TO TRIBUTARY	TOWNSHIP	RANGE	SECTION	QQ	SURVEY CODE AND NUMBER
68	Ulm Creek	Shoshone Creek	52N	04E	5		
69	Unnamed Stream	Ulm Creek	52N	04E	5		
70	Unnamed Stream	Ulm Creek	52N	04E	5		
71	Unnamed Stream	Ulm Creek	52N	04E	5		
72	Hemlock Creek	Shoshone Creek	52N	04E	6		
73	Shoshone Creek	North Fork Coeur d'Alene River	52N	04E	6		
74	Tent Creek	Shoshone Creek	52N	04E	6		
75	Unnamed Stream	Shoshone Creek	52N	04E	6		
76	Unnamed Stream	Shoshone Creek	52N	04E	6		
77	Unnamed Stream	Shoshone Creek	52N	04E	6		
78	Unnamed Stream	Shoshone Creek	52N	04E	6		
79	Unnamed Stream	Shoshone Creek	52N	04E	6		
80	Unnamed Stream	Shoshone Creek	52N	04E	6		
81	Unnamed Stream	Shoshone Creek	52N	04E	6		
82	Little Lost Fork	Shoshone Creek	52N	04E	7		
83	Shoshone Creek	North Fork Coeur d'Alene River	52N	04E	7		
84	Tent Creek	Shoshone Creek	52N	04E	7		
85	Ulm Creek	Shoshone Creek	52N	04E	7		
86	Unnamed Stream	Shoshone Creek	52N	04E	7		
87	Unnamed Stream	Shoshone Creek	52N	04E	7		
88	Clinton Creek	Shoshone Creek	52N	04E	8		
89	Ulm Creek	Shoshone Creek	52N	04E	8		
90	Unnamed Stream	Clinton Creek	52N	04E	8		
91	Unnamed Stream	Clinton Creek	52N	04E	8		
92	Windfall Creek	Shoshone Creek	52N	04E	8		
93	Clinton Creek	Shoshone Creek	52N	04E	9		
94	Unnamed Stream	Clinton Creek	52N	04E	9		
95	Unnamed Stream	Clinton Creek	52N	04E	9		
96	Unnamed Stream	Clinton Creek	52N	04E	9		
97	Unnamed Stream	Clinton Creek	52N	04E	9		
98	Rampike Creek	Shoshone Creek	52N	04E	10		
99	Unnamed Stream	Rampike Creek	52N	04E	10		
100	Cabin Creek	Shoshone Creek	52N	04E	14		
101	Rampike Creek	Shoshone Creek	52N	04E	15		
102	Unnamed Stream	Rampike Creek	52N	04E	15		
103	Unnamed Stream	Rampike Creek	52N	04E	15		
104	Unnamed Stream	Rampike Creek	52N	04E	15		
105	Unnamed Stream	Rampike Creek	52N	04E	15		
106	Rampike Creek	Shoshone Creek	52N	04E	16		
107	Unnamed Stream	Clinton Creek	52N	04E	16		
108	Unnamed Stream	Clinton Creek	52N	04E	16		
109	Clinton Creek	Shoshone Creek	52N	04E	17		
110	Unnamed Stream	Clinton Creek	52N	04E	17		
111	Unnamed Stream	Clinton Creek	52N	04E	17		
112	Unnamed Stream	Shoshone Creek	52N	04E	17		
113	Windfall Creek	Shoshone Creek	52N	04E	17		
114	Little Lost Fork	Shoshone Creek	52N	04E	18		
115	Sentinel Creek	Shoshone Creek	52N	04E	18		
116	Shoshone Creek	North Fork Coeur d'Alene River	52N	04E	18		
117	Ulm Creek	Shoshone Creek	52N	04E	18		
118	Unnamed Stream	Sentinel Creek	52N	04E	18		
119	Unnamed Stream	Shoshone Creek	52N	04E	18		
120	Unnamed Stream	Shoshone Creek	52N	04E	18		
121	Windfall Creek	Shoshone Creek	52N	04E	18		
122	Camp Creek	Shoshone Creek	52N	04E	19		
123	Shoshone Creek	North Fork Coeur d'Alene River	52N	04E	19		
124	Unnamed Stream	Camp Creek	52N	04E	19		
125	Unnamed Stream	Shoshone Creek	52N	04E	19		
126	Unnamed Stream	Shoshone Creek	52N	04E	19		
127	Clinton Creek	Shoshone Creek	52N	04E	20		
128	Shoshone Creek	North Fork Coeur d'Alene River	52N	04E	20		
129	Unnamed Stream	Clinton Creek	52N	04E	20		
130	Unnamed Stream	Shoshone Creek	52N	04E	20		
131	Rampike Creek	Shoshone Creek	52N	04E	21		
132	Unnamed Stream	Cabin Creek	52N	04E	21		
133	Unnamed Stream	Clinton Creek	52N	04E	21		

Attachment 1




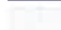

1	A	B	C	D	E	F	G
	SOURCE NAME	TO TRIBUTARY	TOWNSHIP	RANGE	SECTION	QQ	SURVEY CODE AND NUMBER
134	Cabin Creek	Shoshone Creek	52N	04E	22		
135	South Fork Cabin Creek	Cabin Creek	52N	04E	22		
136	Unnamed Stream	Cabin Creek	52N	04E	22		
137	Unnamed Stream	Cabin Creek	52N	04E	22		
138	Cabin Creek	Shoshone Creek	52N	04E	23		
139	South Fork Cabin Creek	Cabin Creek	52N	04E	23		
140	Unnamed Stream	South Fork Cabin Creek	52N	04E	23		
141	South Fork Cabin Creek	Cabin Creek	52N	04E	26		
142	Cabin Creek	Shoshone Creek	52N	04E	27		
143	Chute Creek	Shoshone Creek	52N	04E	27		
144	Unnamed Stream	Cabin Creek	52N	04E	27		
145	Unnamed Stream	Chute Creek	52N	04E	27		
146	Cabin Creek	Shoshone Creek	52N	04E	28	NENE	
147	Unnamed Stream	Rampike Creek	52N	04E	28	NENW	
148	Cabin Creek	Shoshone Creek	52N	04E	28	NESE	
149	Unnamed Stream	Rampike Creek	52N	04E	28	NWNE	
150	Cabin Creek	Shoshone Creek	52N	04E	28	NWSE	
151	Cabin Creek	Shoshone Creek	52N	04E	28	SENE	
152	Unnamed Stream	Rampike Creek	52N	04E	28	SENW	
153	Shoshone Creek	North Fork Coeur d'Alene River	52N	04E	29		
154	Unnamed Stream	Shoshone Creek	52N	04E	29		
155	Unnamed Stream	Shoshone Creek	52N	04E	30		
156	Unnamed Stream	Shoshone Creek	52N	04E	30		
157	Unnamed Stream	Shoshone Creek	52N	04E	30		
158	Pine Flat Creek	Shoshone Creek	52N	04E	31		
159	Unnamed Stream	Pine Flat Creek	52N	04E	31		
160	Unnamed Stream	Shoshone Creek	52N	04E	31		
161	Pine Flat Creek	Shoshone Creek	52N	04E	32		
162	Shoshone Creek	North Fork Coeur d'Alene River	52N	04E	32		
163	Unnamed Stream	Pine Flat Creek	52N	04E	32		
164	Unnamed Stream	Shoshone Creek	52N	04E	32		
165	Chute Creek	Shoshone Creek	52N	04E	33	NESE	
166	Pine Flat Creek	Shoshone Creek	52N	04E	33	NWNW	
167	Rampike Creek	Shoshone Creek	52N	04E	33	NWNW	
168	Shoshone Creek	North Fork Coeur d'Alene River	52N	04E	33	NWNW	
169	Chute Creek	Shoshone Creek	52N	04E	33	NWSE	
170	Unnamed Stream	Shoshone Creek	52N	04E	33	NWSW	
171	Pipe Creek	Shoshone Creek	52N	04E	33	SESE	
172	Pipe Creek	Shoshone Creek	52N	04E	34	NENE	
173	Chute Creek	Shoshone Creek	52N	04E	34	NENW	
174	Unnamed Stream	Chute Creek	52N	04E	34	NENW	
175	Pipe Creek	Shoshone Creek	52N	04E	34	NESW	
176	Chute Creek	Shoshone Creek	52N	04E	34	NWNE	
177	Chute Creek	Shoshone Creek	52N	04E	34	NWNW	
178	Unnamed Stream	Chute Creek	52N	04E	34	NWNW	
179	Pipe Creek	Shoshone Creek	52N	04E	34	SENE	
180	Pipe Creek	Shoshone Creek	52N	04E	34	SWNE	
181	Chute Creek	Shoshone Creek	52N	04E	34	SWNW	
182	Shoshone Creek	North Fork Coeur d'Alene River	53N	03E	25		
183	Hemlock Creek	Shoshone Creek	53N	03E	35		
184	Unnamed Stream	Hemlock Creek	53N	03E	35		
185	Unnamed Stream	Hemlock Creek	53N	03E	35		
186	Unnamed Stream	Hemlock Creek	53N	03E	35		
187	Shoshone Creek	North Fork Coeur d'Alene River	53N	03E	36		
188	Unnamed Stream	Hemlock Creek	53N	03E	36		
189	Unnamed Stream	Shoshone Creek	53N	03E	36		
190	Unnamed Stream	Shoshone Creek	53N	03E	36		
191	Unnamed Stream	Shoshone Creek	53N	03E	36		
192	Unnamed Stream	Shoshone Creek	53N	03E	36		
193	Shoshone Creek	North Fork Coeur d'Alene River	53N	04E	19		
194	Unnamed Stream	Shoshone Creek	53N	04E	29		
195	Unnamed Stream	Shoshone Creek	53N	04E	29		
196	Shoshone Creek	North Fork Coeur d'Alene River	53N	04E	30		
197	Unnamed Stream	Shoshone Creek	53N	04E	30		
198	Unnamed Stream	Shoshone Creek	53N	04E	30		
199	Shoshone Creek	North Fork Coeur d'Alene River	53N	04E	31		

Attachment 1

	A	B	C	D	E	F	G
1	SOURCE NAME	TO TRIBUTARY	TOWNSHIP	RANGE	SECTION	QQ	SURVEY CODE AND NUMBER
200	Unnamed Stream	Shoshone Creek	53N	04E	31		
201	Unnamed Stream	Shoshone Creek	53N	04E	31		
202	Unnamed Stream	Shoshone Creek	53N	04E	31		
203	Unnamed Stream	Shoshone Creek	53N	04E	31		
204	Unnamed Stream	Shoshone Creek	53N	04E	31		
205	Unnamed Stream	Shoshone Creek	53N	04E	31		
206	Unnamed Stream	Shoshone Creek	53N	04E	31		
207	Ulm Creek	Shoshone Creek	53N	04E	32		
208	Unnamed Stream	Shoshone Creek	53N	04E	32		
209	Unnamed Stream	Shoshone Creek	53N	04E	32		
210	Unnamed Stream	Ulm Creek	53N	04E	32		
211	Ulm Creek	Shoshone Creek	53N	04E	33		
212	unnamed pond	Sink	52N	03E	14		
213	unnamed pond	Sink	52N	03E	36		

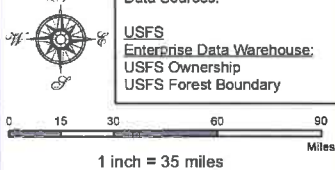
Attachment 2
 Place of Use Map Fire Suppression - Water Right No. 94-09519A
 National Forests in Idaho and the Kaniku, Lolo and Kootenai NF in Montana

Key to Features

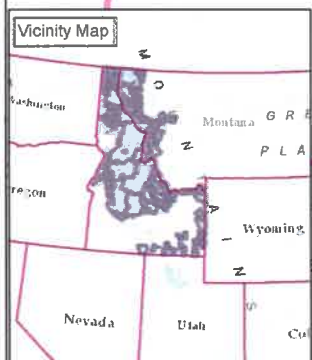
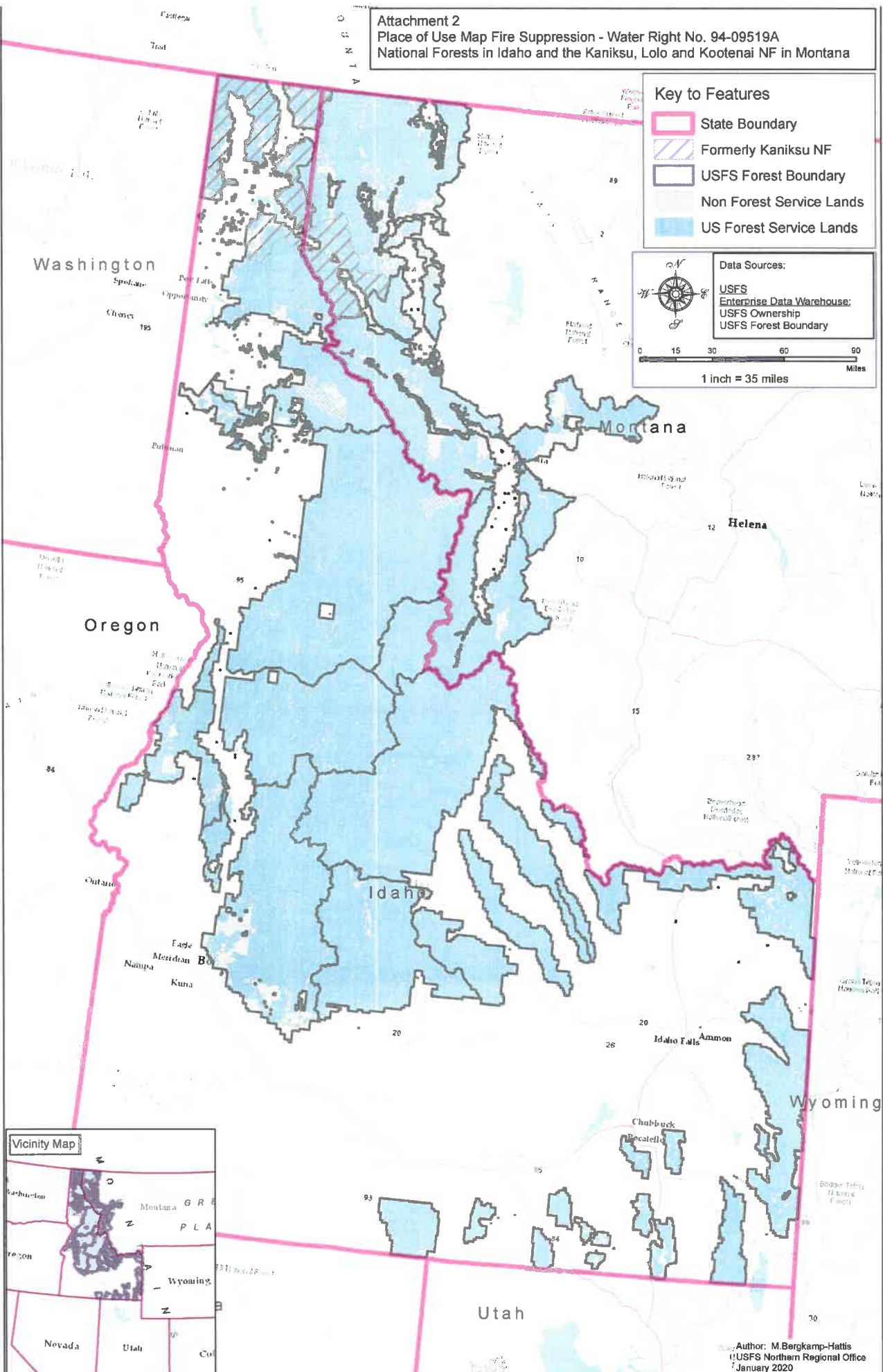
-  State Boundary
-  Formerly Kaniku NF
-  USFS Forest Boundary
-  Non Forest Service Lands
-  US Forest Service Lands

Data Sources:

- USFS
- Enterprise Data Warehouse:
- USFS Ownership
- USFS Forest Boundary



0 15 30 60 90
Miles
1 inch = 35 miles



Author: M Bergkamp-Hattis
 USFS Northern Regional Office
 January 2020